

Diverting Youth With Behavioral Health Needs

From the School-Justice Pathway:

SCHOOL-BASED BEHAVIORAL HEALTH DIVERSION—WHO, WHY, AND HOW

OVERVIEW

The School Responder Model (SRM) is a behavioral health response to school infractions that provides an alternative to calling law enforcement and addresses root causes of behavior. In an SRM, a responder screens youth for behavioral health needs, which include mental and substance use disorders and traumatic exposure, and connects youth to effective community-based behavioral health services. An effective responder initiative will identify youth with behavioral health needs, reduce their disproportionate referral to the juvenile justice system, and increase their connection to appropriate services that have been shown to work.

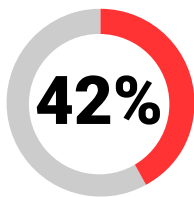
WHAT IS THE SCHOOL-JUSTICE PATHWAY AND WHERE DID IT COME FROM?

SCHOOL-JUSTICE PATHWAY

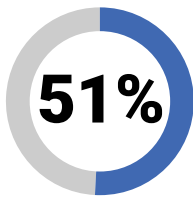


HISTORY Over the past 20 years, widespread use of zero-tolerance policies and exclusionary discipline coupled with a dramatic increase in school-based law enforcement has created a pathway for youth from misbehavior in school to involvement with the juvenile justice system.

IMPACT Youth with behavioral health needs are disproportionately subject to exclusionary discipline. These same youth have a disproportionately high likelihood of being arrested in schools.



of high schools have sworn law enforcement officers (SLEOs)



of high schools with high Black and Latino student enrollment have SLEOs

Suspension and expulsion have become common reactions to low-level misbehavior in schools, and the use of suspension and expulsion are often the first step towards involvement with the juvenile justice system. Many schools have adopted zero tolerance policies that go well beyond the federal mandate requiring expulsion of students who bring guns to school, often including a variety of infractions including violence, weapons, alcohol, drugs, tobacco, and other more minor offenses (Skiba, et al., 2006).

Out-of-school suspensions have increased by



since 2000 since the 1970s (Justice Policy Institute)



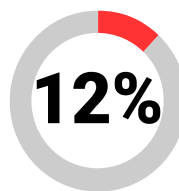
youth were arrested in schools during the 2011-12 school year (U.S. Dept. of Education)



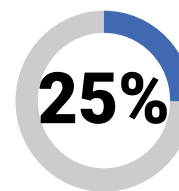
students with disabilities are 2x as likely as students without disabilities to receive an out-of-school suspension



students suspended or expelled are nearly 3x as likely as their peers to be in contact with the juvenile justice system the next year



of students have Individualized Education Programs (IEPs)



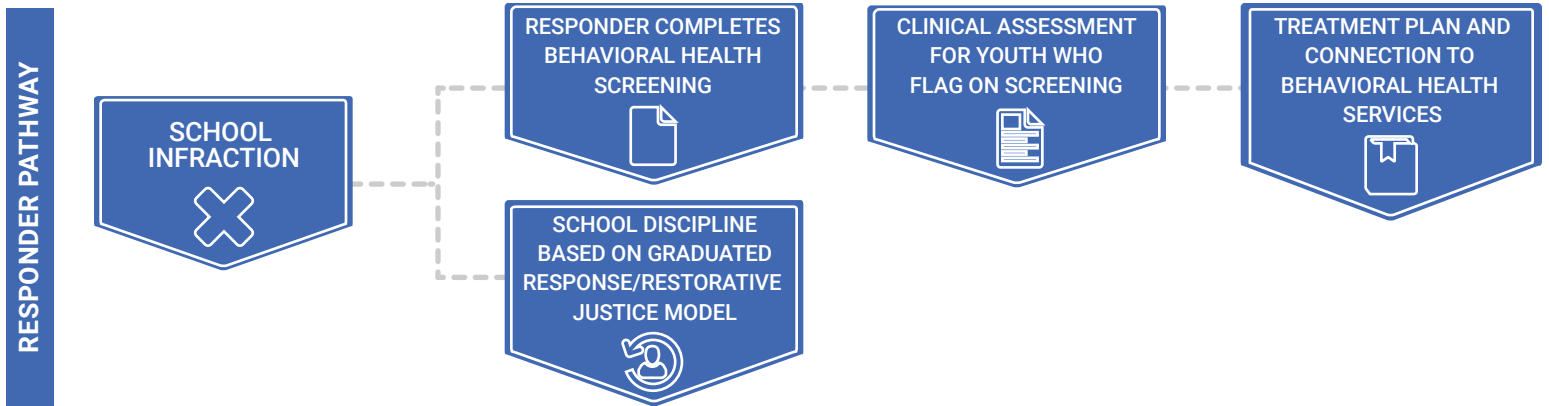
of students arrested in school have IEPs



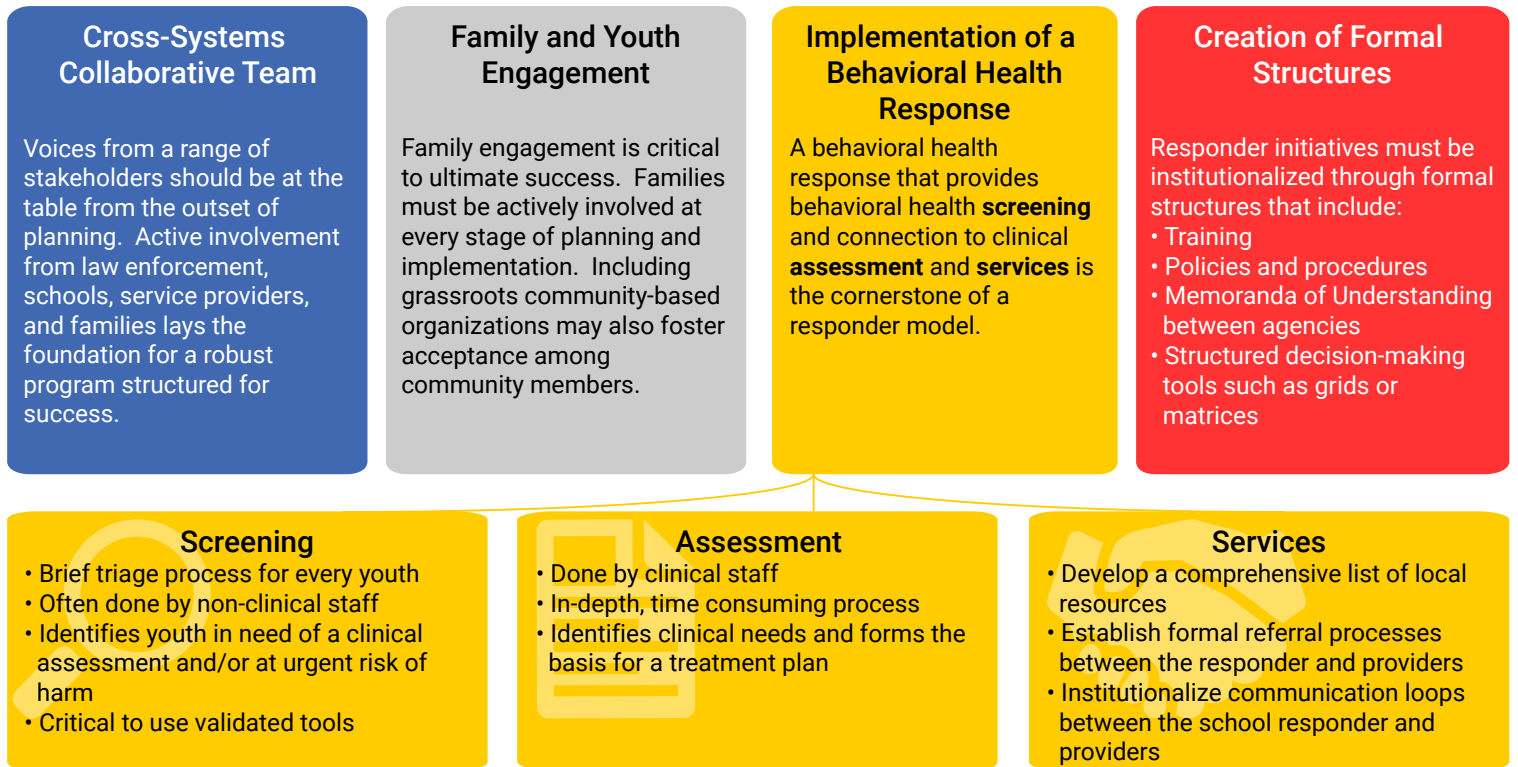
Funded in part through support from the National Technical Assistance Network for Children's Behavioral Health operated by and coordinated through the University of Maryland, and under contract with the U.S. Department of Health and Human Services, Substance Abuse and Mental Health Services Administration, Contract #HH280201500007C. The contents do not necessarily represent the policy of the U.S. Department of Health and Human Services, nor does mention of trade names, commercial practices, or organizations imply endorsement by the U.S. Government.

THE RESPONDER MODEL

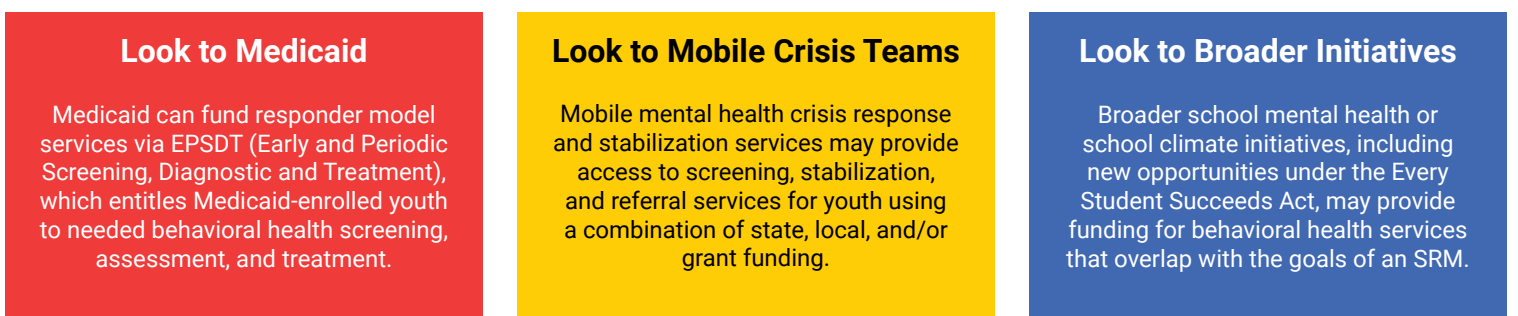
AN ALTERNATIVE PATHWAY



KEY COMPONENTS OF THE RESPONDER MODEL



WHERE DOES FUNDING FOR A RESPONDER MODEL COME FROM?



RESPONDER MODELS

HOW FOUR COMMUNITIES CREATED ALTERNATIVES TO THE SCHOOL-JUSTICE PATHWAY: CONNECTICUT & OHIO

CONNECTICUT SCHOOL-BASED DIVERSION INITIATIVE



PARTNERS

Schools, Emergency Mobile Psychiatric Services (EMPS), Child Health and Development Institute of Connecticut, law enforcement, and families



RESPONDERS

EMPS



FOCUS

Youth subject to discretionary school arrests, out-of-school suspensions, and expulsions

PATHWAY



School personnel call 211, a statewide call center, which provides a warm transfer to a local EMPS provider



The EMPS provider, a masters-level clinician, will be on-site within 45 minutes



The EMPS provider engages youth in crisis stabilization, assessment, and brief treatment



EMPS can then engage in up to 45 days of ongoing assessment, case planning, and referral work with youth



FUNDING

EMPS services are supported through a combination of state, Medicaid, and private insurance funding. Ongoing services are covered by health insurance.



RESULTS

On average, in the first year of utilization by participating schools, EMPS referrals rose by 94%, while court referrals fell by an average of 45%. Participating schools have seen decreased arrests, re-arrests, suspensions, and expulsions.

FORMAL STRUCTURES

The School-based Diversion Initiative is grounded in several formal structures to support sustainability, including:

- Professional development
- A graduated response model for school discipline
- Memoranda of Agreement between schools and EMPS as well as between schools and police
- Data collection and program monitoring

SUMMIT COUNTY, OHIO RESPONDER PROGRAM



PARTNERS

Summit County Juvenile Court, schools, and families



RESPONDERS

Experienced case manager from the Family Resource Center at Summit County Juvenile Court



FOCUS

Youth with school behavior and attendance issues

PATHWAY



Schools contact family and refer them to the Responder Case Manager (RCM)



RCM convenes team—youth, family, and school



RCM provides screening (MAYSI-2) after first or second meeting



RCM refers to community-based clinical resources as well as supplemental services (e.g., mentoring, tutoring, basic need supports)



RCM provides case management for 6 months



FUNDING

Summit County Juvenile Court pays for the Responder and clinical services are supported with each youth's health insurance.



RESULTS

While most youth were referred to the Responder Program for behavior or truancy issues, nearly 90% were referred into mental health programming as a result of their screening and assessments. Successful completion of the program has a positive impact on future charges. One year after referral, only 37% of youth who completed the program received another charge, while 77% of youth who did not successfully complete the program got a new charge.

FAMILY ENGAGEMENT

The Responder Program places a strong emphasis on family engagement, including:

- Use of a guide for families and information video made for families
- Frequent meetings with families, regular solicitation of families' level of satisfaction, and efforts to ask families for their active input

RESPONDER MODELS

HOW FOUR COMMUNITIES CREATED ALTERNATIVES TO THE SCHOOL-JUSTICE PATHWAY: NEVADA & WISCONSIN

LYON COUNTY, NEVADA RESPONDER PROGRAM



PARTNERS

Schools, families, Healthy Communities Coalition, probation, and providers



RESPONDERS

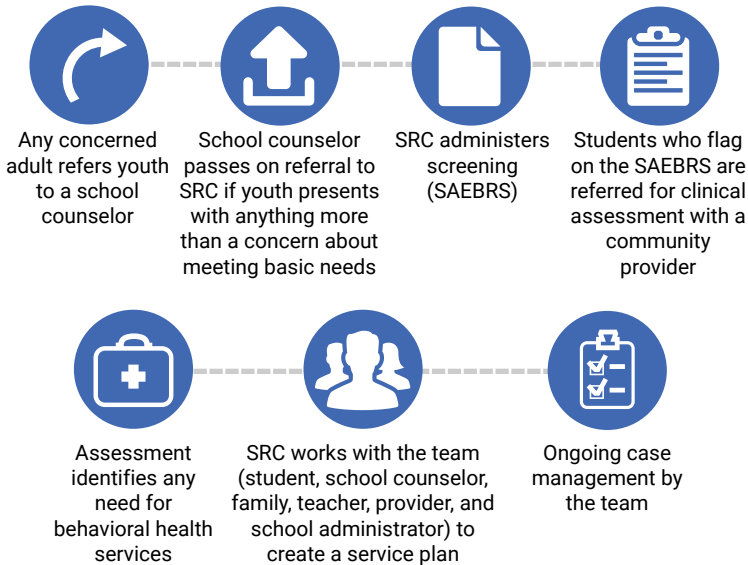
School resource coordinator (SRC), who may be a social worker or a community health worker



FOCUS

Youth in graduated discipline process; indication of trauma; social or emotional concerns; attendance issues; educational failure; not thriving despite previous asset-building interventions

PATHWAY



FUNDING

Safe Schools/Healthy Students and Nevada Public and Behavioral Health.



RESULTS

Early results after implementation in the spring of 2016 show a 15% reduction in probation referrals.

CROSS-SYSTEMS COLLABORATION TO OVERCOME RURAL CHALLENGES

The Lyon County SRM brings various systems together through a collective impact model to overcome challenges of service provision in a rural area. Effective strategies have resulted, including:

- Building on Safe Schools/Healthy Students
- Accessing services through tele-health

BELOIT, WISCONSIN SRM



PARTNERS

Schools, county human services, probation, law enforcement, families



RESPONDERS

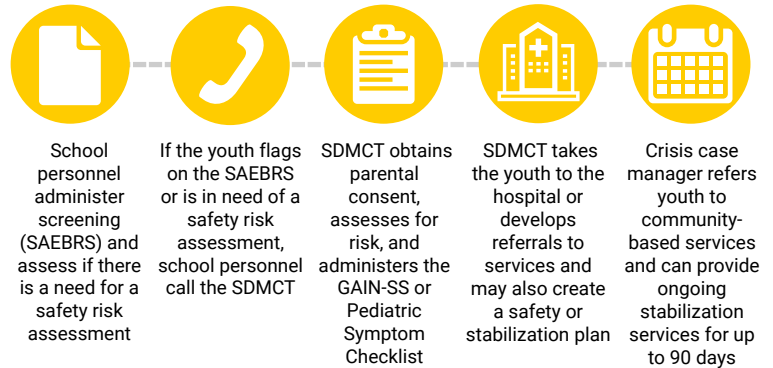
School Diversion Mobile Crisis Team (SDMCT)



FOCUS

Youth at risk of referral into the juvenile justice system or who may have a behavioral health need

PATHWAY



FUNDING

Mobile crisis and stabilization services are funded through a combination of Medicaid and local tax levy dollars.



RESULTS

To be determined. This a new program, launching in the fall of 2016.

A MOBILE CRISIS TEAM AS THE RESPONDER

The Beloit SRM built on the local mobile crisis team structure to develop a school diversion crisis team to function as the responder. Use of the mobile crisis services in this way required:

- An expansion of the criteria for a crisis response
- A shift in the philosophy for school and crisis personnel
- Training